

The Community Garden Club of Cohasset



December 2017 Edition

President's Message:

How did it get so late so soon?
It's night before it's afternoon.
December is here before it's June.
My goodness how the time has flown.
How did it get so late so soon?

Dr. Seuss



Everyone is working hard to make Yuletide 2017 a great success. Creative minds and hands have been at work for over a year. Now we are 15 days away. To all of you who have taken part or will take part, CGCC is extremely grateful. After December 7th, you will have time to decorate your own homes. Shortly thereafter, the cycle will begin again as you plan for next year's gardens.

I wish you all a Happy Yuletide and a peaceful and joyful New Year!

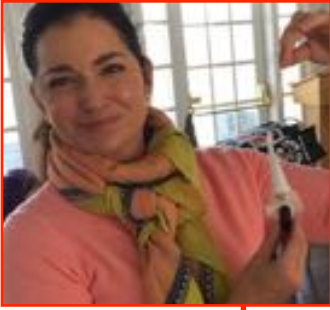
Maureen Adams

December Calendar:

- 4** Craft Workshop: Monday, 9:30 a.m. at Kate's House, 43 Pond St.
- 5** Craft Workshop: Tuesday, 9:30 a.m. at Kate's House, 43 Pond St.
- 6** Yuletide Marketplace Setup, St. Anthony's Parish Hall, 10:00 a.m. to 4:00 p.m.
- 7** **Yuletide House Tour, 10:00 a.m. to 4:00 p.m.**
- 13** **Garden Therapy:** Harborview Center for Nursing & Rehabilitation, 2:00-3:00 p.m.
"Jingle Bells"
- 18** **Junior Gardeners:** Deer Hill School Cafeteria, 2:40-3:40 p.m. "Winter Bulbs" by Marlene Tabor and Maureen Flaherty



Marketplace Workshops - Save the Dates

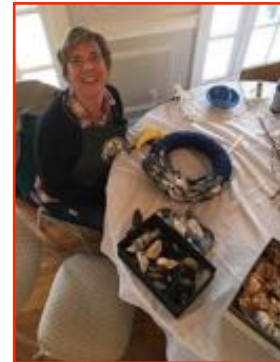


Please join us on Wednesday and Thursday, November 29 & 30, at the Lightkeeper's Cottage at 9:30 for some crafting. Also, we will put finishing touches on our crafts and greens Monday, Dec. 4, and Tuesday, Dec. 5, at Kate Farrington's House, 43 Pond St., at 9:30 a.m.

The workshops are free and we will be making various items for sale at the Yuletide Marketplace. There will be several different crafts at each session so you will always find something suitable to your skills.

Any questions?

kateRfarrington@yahoo.com



Marketplace Elves hard at work



Thanks to some of our devoted elves for their enthusiasm and hard work!

Top Left, clockwise: Sheila Toomey, Tania McCann, Marlene Tabor, Kelly Conetta, Anne Sexton, Tanna Kasperowicz, Kate Farrington, Diane Benson, Kathy Gray, Mary McLaughlin, Iku Isihara, Marie Sullivan, Eugenia Kelley, Barbie Bowman, Lee Drew, Ann Helbock, Susan Reagan.



The Garden Club Federation of Massachusetts, Inc. Schools

SCHOOL REGISTRATIONS: Details, costs, & registration forms on www.gcfm.org

Flower Show School:

INFORMATION coming soon

Gardening Study School: Course I Series II April 12 & 13, 2018 at Tower Hill Botanic Garden

Thursday, April 12 (Tested subjects)

Basic Botany - Dr. Judith Sumner, Botanist

Characteristics of Soils – Betty Sanders, Horticultural Consultant

Techniques For Growing Outdoor Flowers – Betty Sanders, Horticultural Consultant

Friday, April 13 (Non-tested subjects)

Plant Propagation- Joann Viera, Horticulturalist Tower Hill

Vegetative Propagation- Joann Viera, Horticulturalist Tower Hill

Composting- Paul Rodgers, Horticultural Consultant

Test for those becoming consultants

Also offered:

Design workshop: Series of 3 hands-on sessions includes instruction & materials: Oct. 10, 2017; January 16, 2018; April 10, 2018; held at Mass. Hort. Society (Elm Bank) 900 Washington St., Wellesley.

Back to Basics: Designers demonstrate how to create floral designs; Espousal Retreat House, 554 Lexington St., N. Waltham, MA.

Congratulations to Jeanne Boutross awarded Garden Club Federation of Massachusetts “Unsung Hero”



Jeanne continues to contribute to the fiber of our club with all her artistic talents making bows and decorations for Garden Therapy, cutting greens, creating crafts for our yuletide marketplace and always helping without the slightest hesitation. She is definitely our “Unsung Hero”. Thank you, Jeanne!

“Heirloom and Native Plants...a Living History”



John Forti, Executive director of Bedrock Gardens, Lee, N.H., talked about the significance of heirloom plants for gardens that inspire a sense of time and place.



Thanks to Pam Kelly for hosting our October meeting with the help of Emily Moore, Pat McCarthy, Hortense McCarthy, Mary McLaughlin, Carole Meers, Annjean Moody, Gretchen Sheets and Delcy Ramirez.

Horticulture Workshop

Dana Roberts demonstrated various ways to create a lovely Thanksgiving Tablescape using plants, fruit, and vegetables.



Junior Gardeners



Thanks to our wonderful crew of helpers who showed the children how to make a Thanksgiving cornucopia to bring home for their Thanksgiving table!

Top Left L to R: Kate Farrington, Martha Gjestebj, Susan Reagan, Maureen Flaherty, Kathy Gray, Claire Tinory, Carol Graham and Mary Ward.



Yuletide Workshop with Paul Douglas, floral arranger



Paul Douglas created several holiday arrangements for us to start the juices flowing for our decorating of the Yuletide homes!

Garden Therapy at Harborview Center for Nursing and Rehabilitation



Thanks to Sheila Toomey, Sue Reagan, Jeanne Boutross, Jennifer Stockbridge, and Julie Hess for helping out! "Giving Thanks" was this month's theme.



Senior Center at Willcutt Commons



L to R: Barbara Dillon, Dolores Roy, Lee Drew and Kelly Conetta worked with our ambitious seniors creating centerpieces with "The Holidays are Coming" theme.

Our Sister Club The Garden Club of Nagoya, Japan

Our November general meeting was a field trip to view the autumn scarlet and yellow leaves which have just started to cover the rolling hills about one hundred miles North of Nagoya. After we transited to a third sector train nicknamed Kinoko (Mushroom) Train, we were served on board the dining car with local mushroom dishes while enjoying autumnal leaves along the railroad.

Takako Kohri

Recording Secretary



Please submit pictures, updates, articles etc. to Barbara Canney, Newsletter Editor.
barbaracan@me.com

